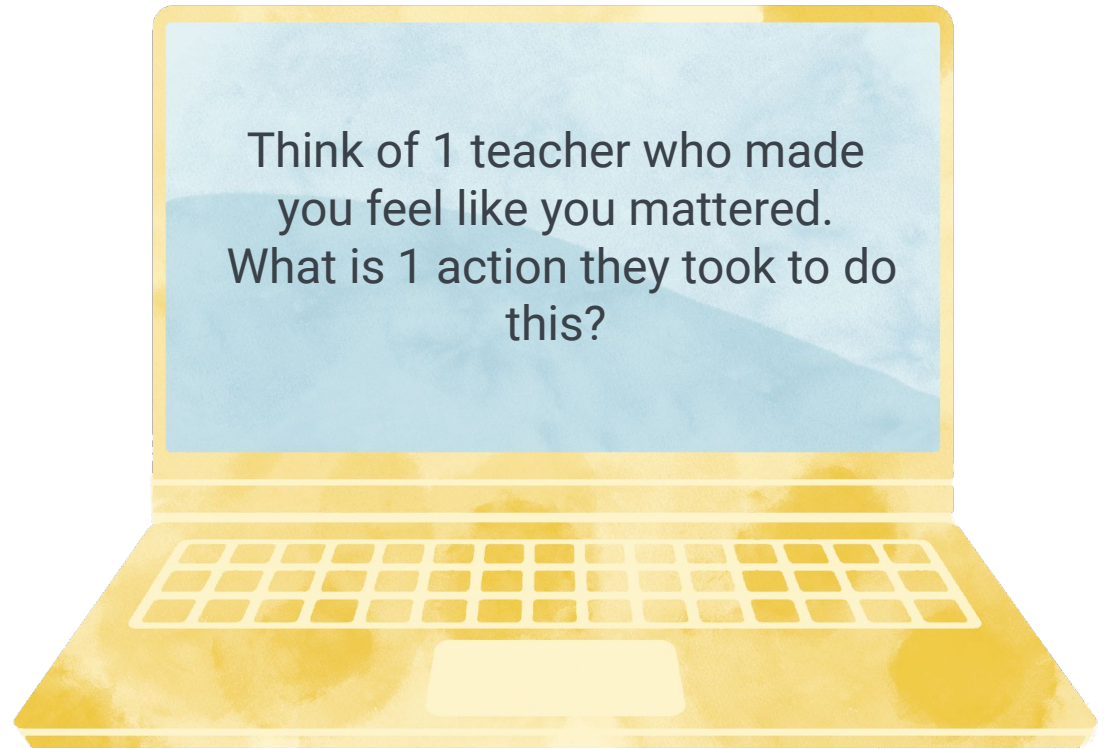


Check-in

Share your response in
the chat



Welcome from Education Elements



Katie Camp

Katie@edelements.com



Maryell Hernandez

Maryell@edelements.com

Principles that guide our approach to Personalized Learning



Student-Centered Design

A student-centered approach to learning that calls on educators to be responsive to the needs of their students, ensuring they get the instruction they need, when they need it.



Nurturing Learning Environments

Developing nurturing learning environments (self-awareness, social awareness, strong relationships) creates the conditions to personalize learning for students.



Equity Focused

Equity provides a powerful reason to personalize learning for students, and it requires us to reimagine the systems that are not supporting the success of all students.



Data Informed

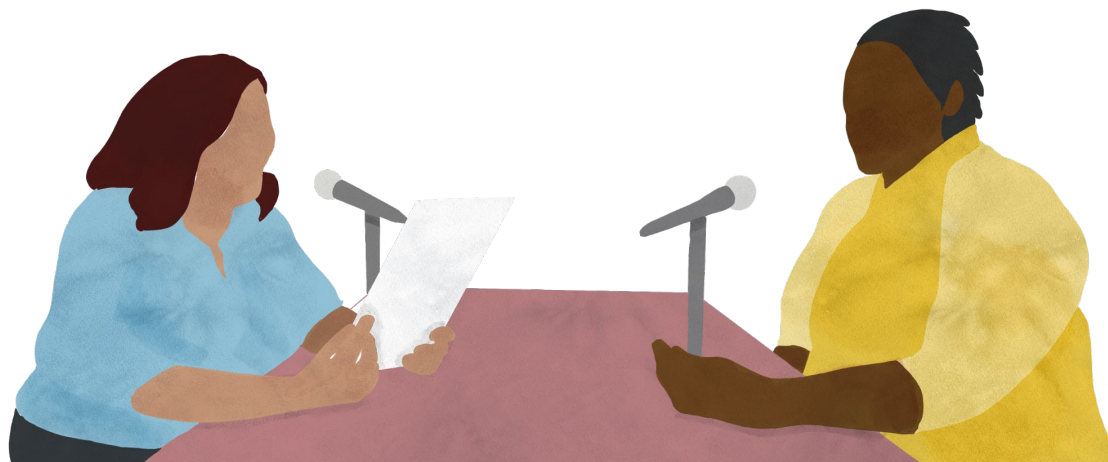
Organizations have deeply embedded practices and norms about how data is used. They take a holistic approach to data that is user-centered.

Objectives

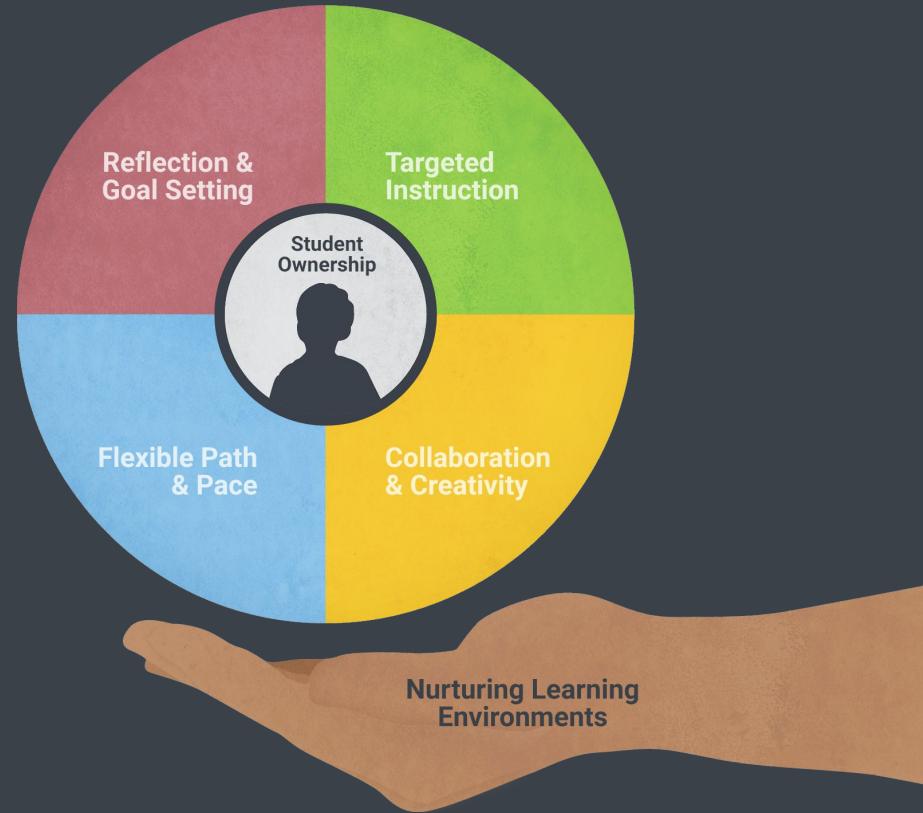
Share a variety of perspectives

Promote conversations

Discuss alignment with personalized learning



Our Approach



The Goal is Student Ownership



Nurturing Learning Environments

Self-Awareness, Social Awareness, Strong Relationships



What is a Nurturing Learning Environment?

Developing nurturing learning environments create the conditions to personalize learning for students. Nurturing learning environments include these foundational elements:



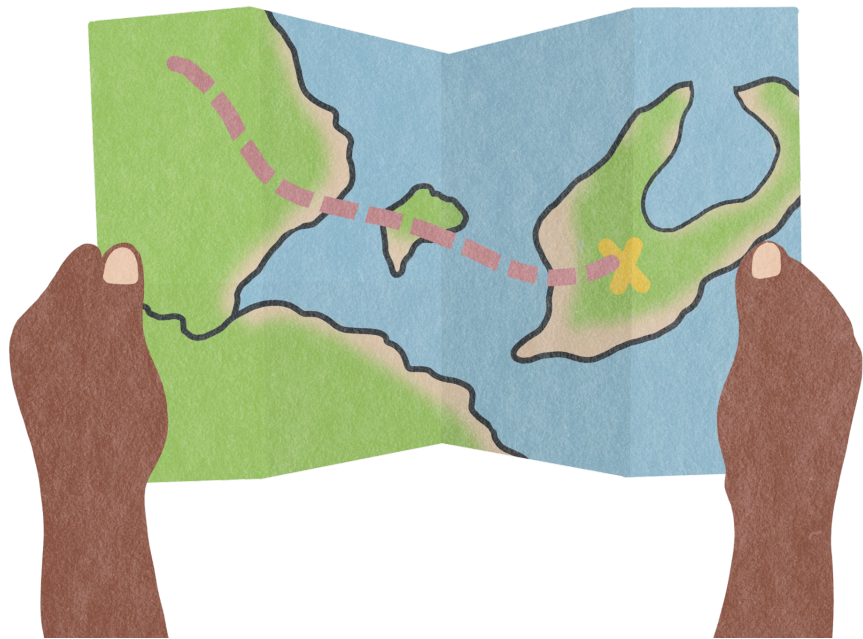
Social Awareness



Self Awareness



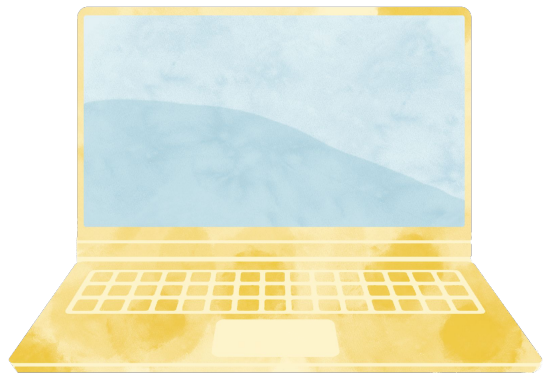
Strong Relationships



How did we get here?

Conversation

In the chat, share what you're thinking.



Why is creating this space important to your school, classroom and community?

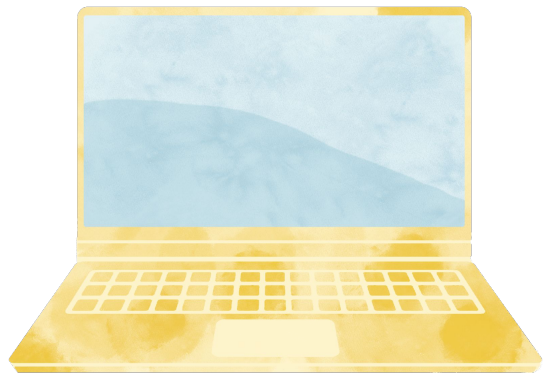




*What does this look like
in practice?*

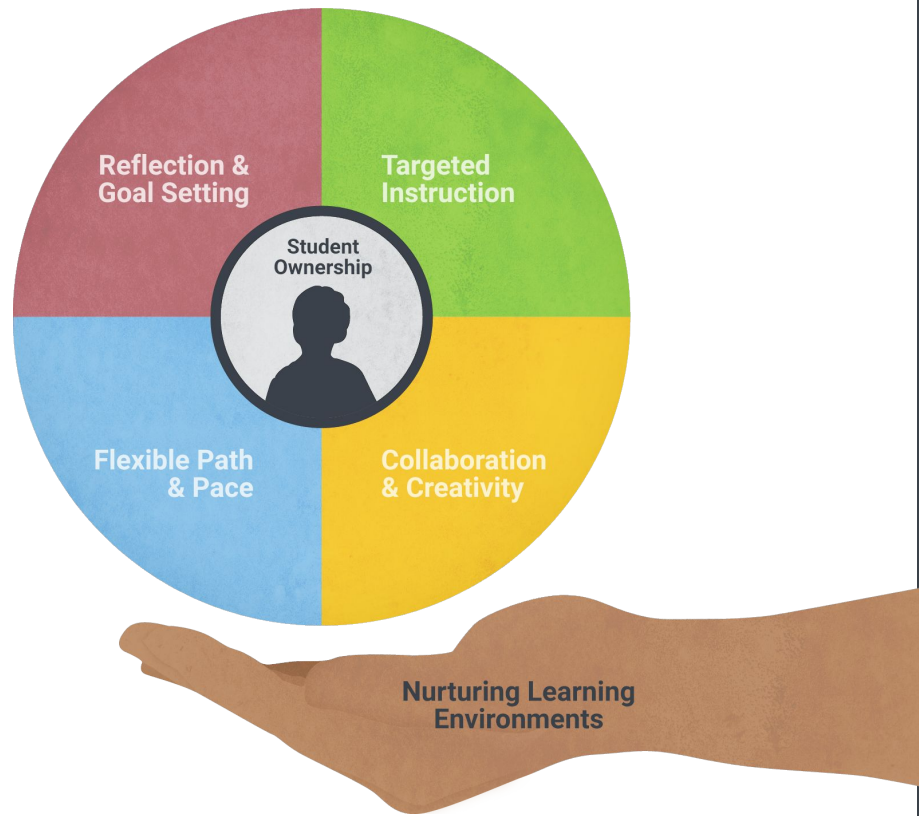
Conversation

In the chat, share
what you're thinking.



What have you seen, or done to create a Nurturing Learning Environment?



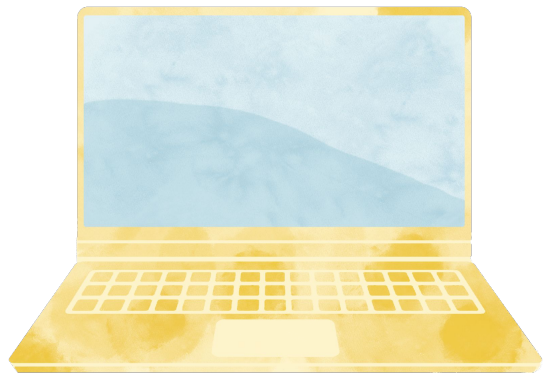


*Is this separate from the
Core 4?*



*What if I'm not a natural
"Nurturer"?*

Conversation



What is resonating with you?

**As you think about sharing this with your team
what challenges do you anticipate?**



EXPERT

CONVERSATIONS

A Webinar Series

Delve into the Specific Principles that Drive
Personalized Learning Reimagined

REGISTER NOW!

edelements.com/expert-convos

Oct 21
Student-Centered
Design

Oct 28
Nurturing Learning

Nov 4
Equity Focused

Nov 9
Data Informed