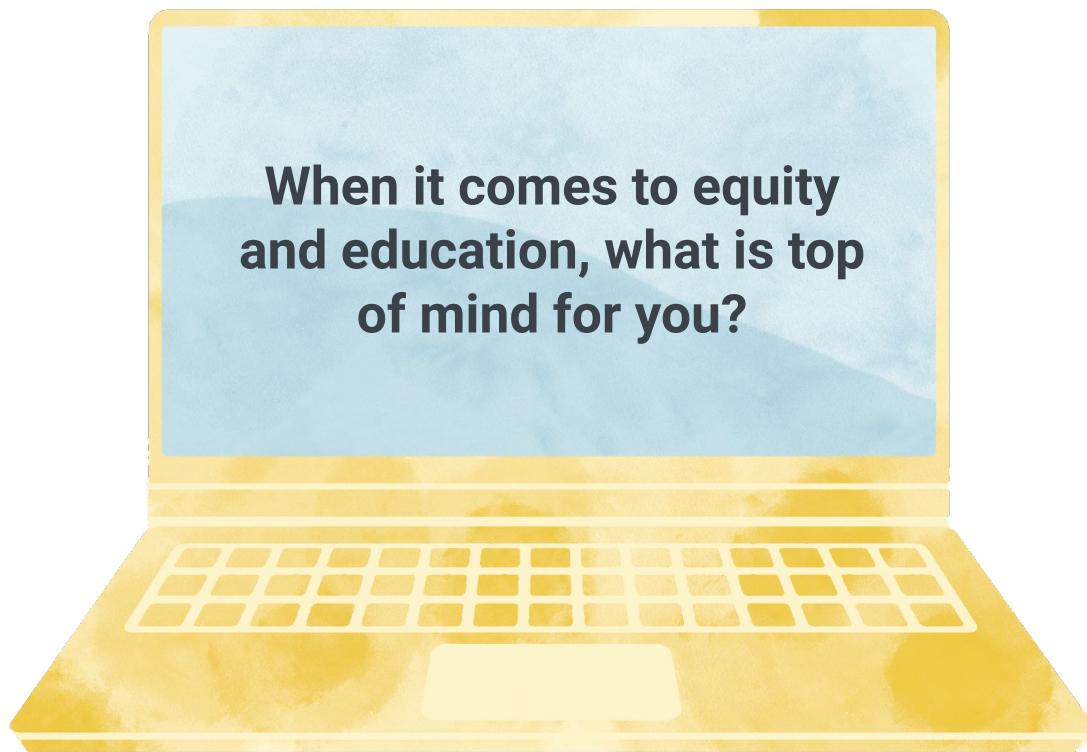


Check-in

Share your response in
the chat



Welcome from Education Elements



Noah Dougherty

noah@edelements.com

@noahdougherty



Josue Falaise

josue@edelements.com

@josuefalaise

Why is equity important to you?

EXPERT

CONVERSATIONS

A Webinar Series

Delve into the Specific Principles that Drive
Personalized Learning Reimagined

REGISTER NOW!

edelements.com/expert-convos

Oct 21
Student-Centered
Design

Oct 28
Nurturing Learning

Nov 4
Equity Focused

Nov 9
Data Informed

Principles that inform systems-level change



Student-Centered Design

A student-centered approach to learning that calls on educators to be responsive to the needs of their students, ensuring they get the instruction they need, when they need it.



Nurturing Learning Environments

Developing nurturing learning environments (self-awareness, social awareness, strong relationships) creates the conditions to personalize learning for students.



Equity Focused

Equity provides a powerful reason to personalize learning for students, and it requires us to reimagine the systems that are not supporting the success of all students.



Data Informed

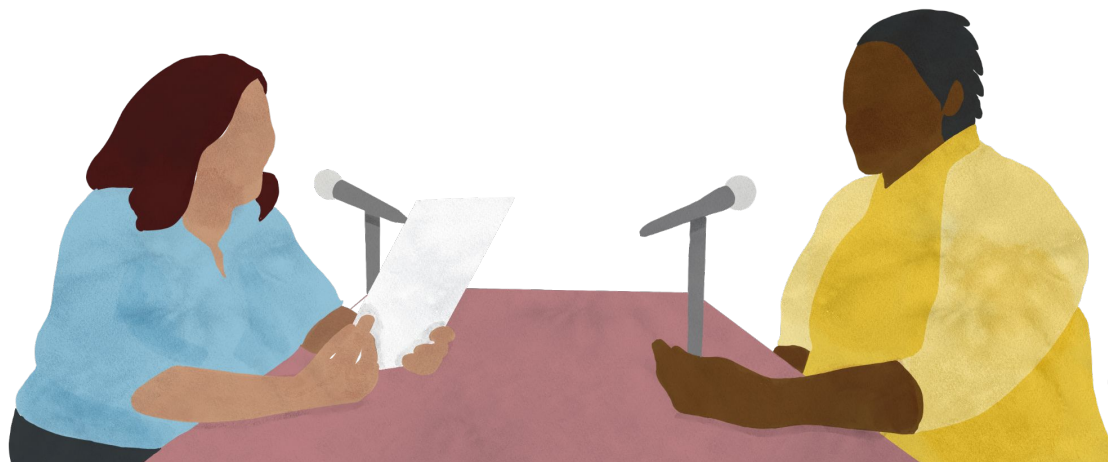
Organizations have deeply embedded practices and norms about how data is used. They take a holistic approach to data that is user-centered.

Objectives

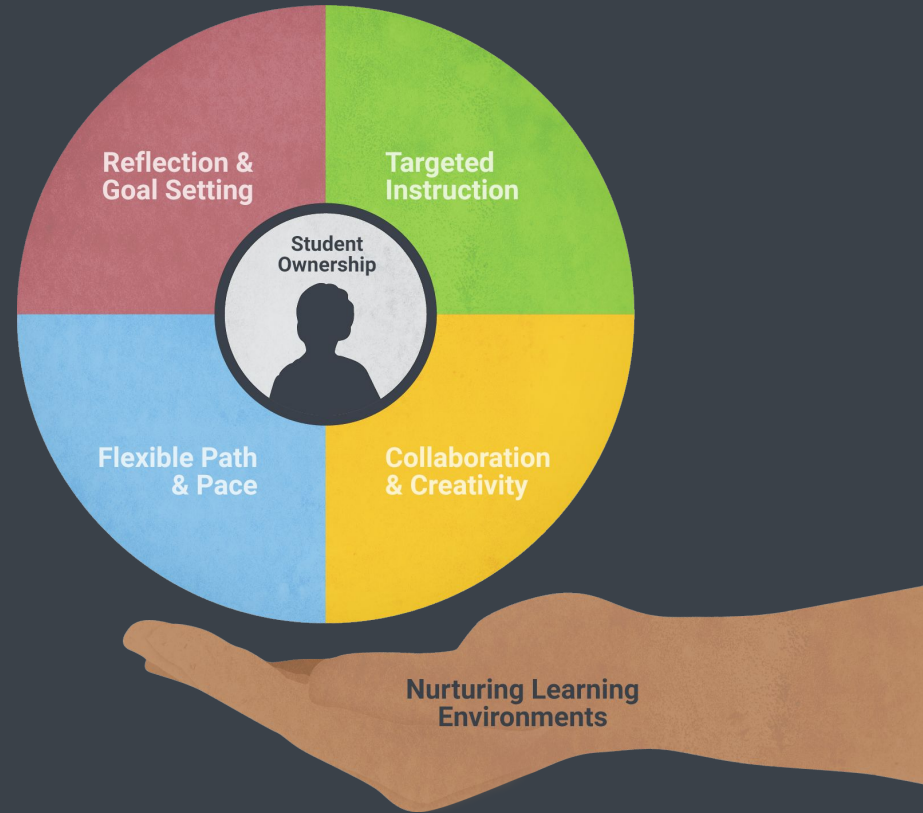
Share a variety of perspectives

Promote conversations

Discuss alignment with personalized learning

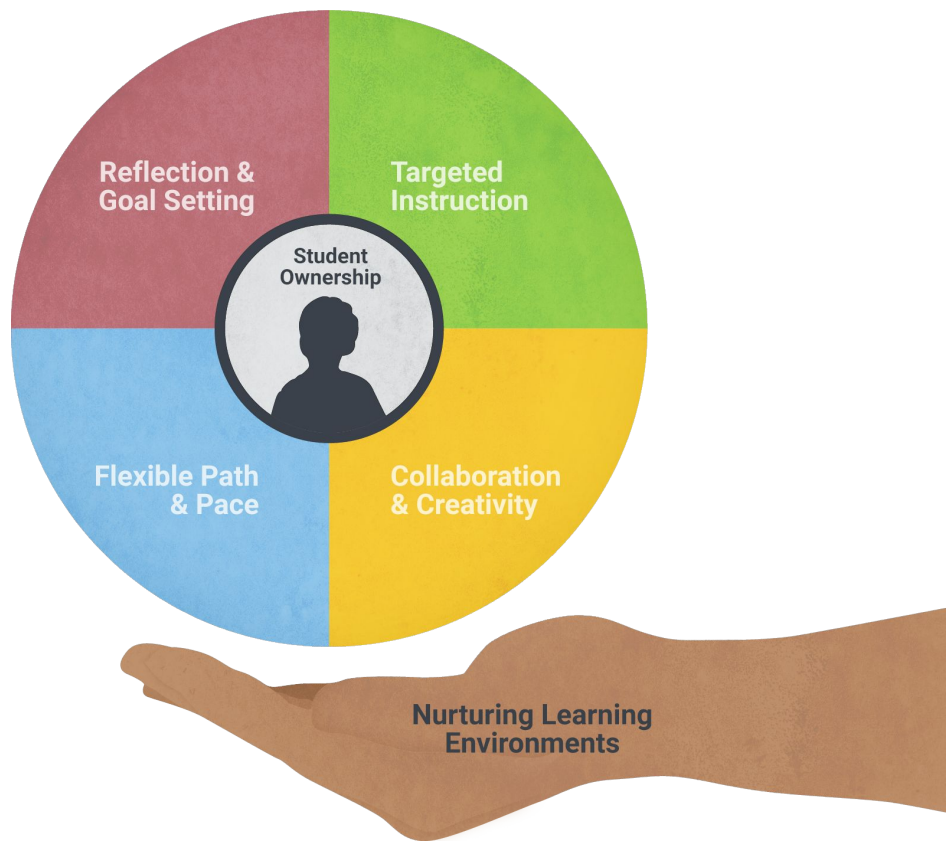


Our Approach



The Core Four of PL

- Student ownership is the goal
- Nurturing learning environments are essential
- Four components (classroom practices)



The Goal is Student Ownership



Nurturing Learning Environments

Self-Awareness, Social Awareness, Strong Relationships



Reflection and Goal Setting

Reflection builds the self-awareness that can make goal-setting truly meaningful.



Targeted Instruction

At its most actualized, students can articulate what instruction they are receiving and why



Flexible Path and Pace

The design of the learning experience ensures students get what they need when they need it.



Collaboration and Creativity

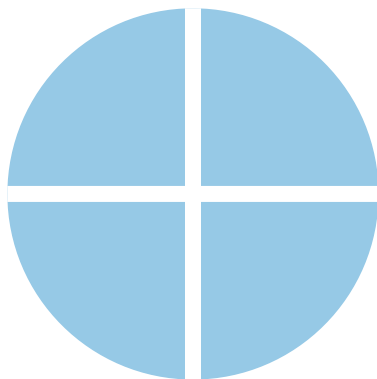
Discussing ideas, meaning, and problems sparks creativity and inspires novel ideas.



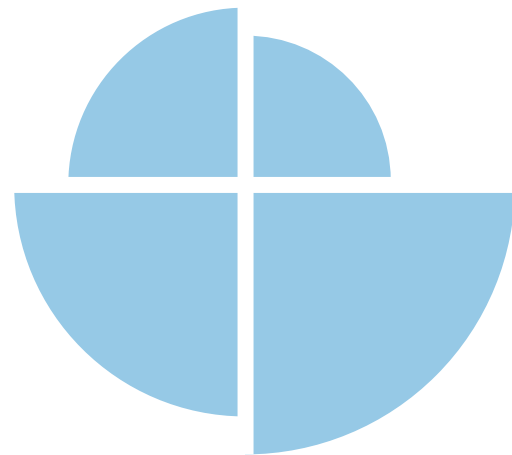
Equity and personalized learning

Equity provides a powerful **reason** to personalize learning for students, and it requires us to reimagine the systems that are not supporting the success of all students.

Equality: the state of being equal; the same for everyone

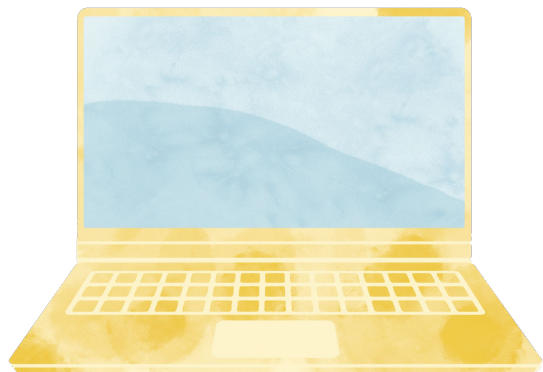


Equity: everyone gets the support they need to achieve the same results



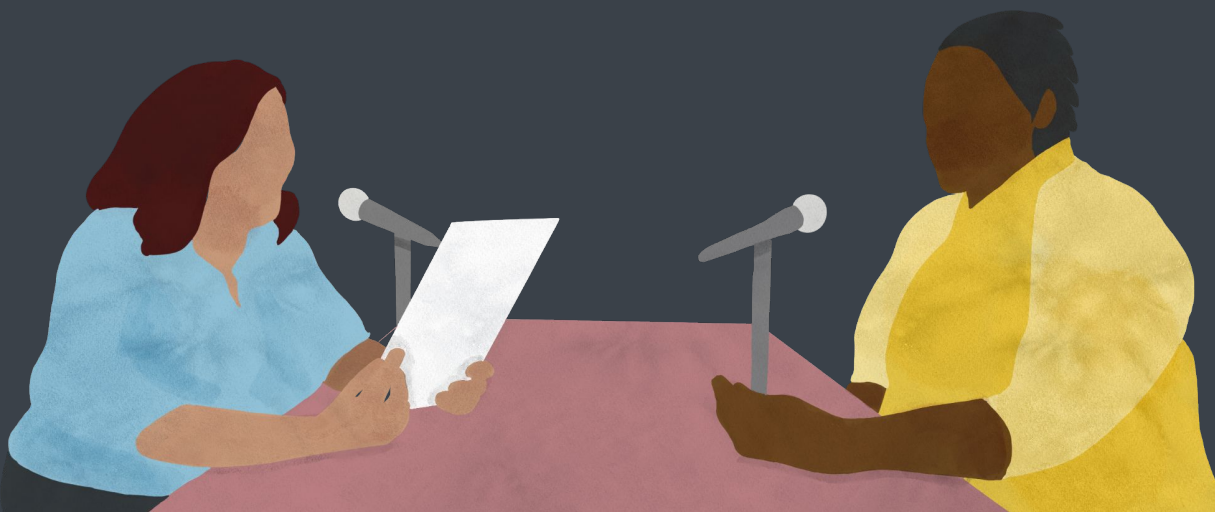
Conversation

In the chat, share what equity as the purpose of personalizing learning means to you.



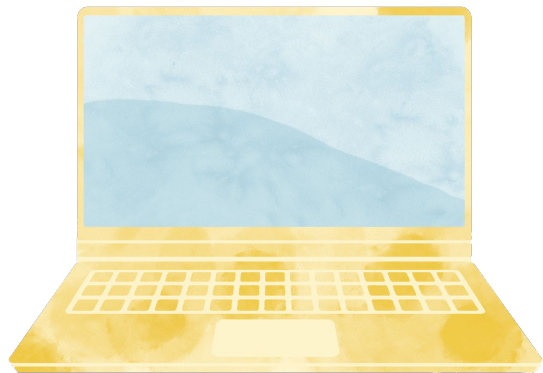
Why approach as a purpose

What does this mean to you?



Conversation

In the chat, share questions or challenges, related to equity conversations, you are looking for advice on.



Why still talk about equity?

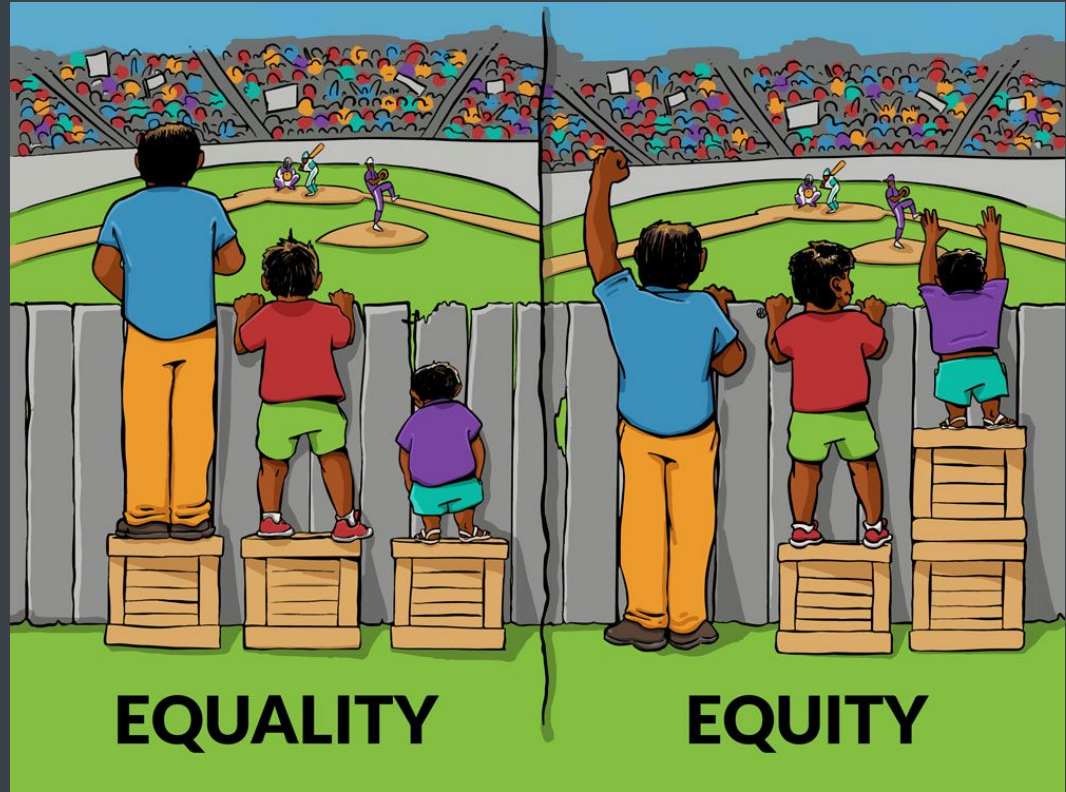
Advice navigating these conversations



Equity vs. Equality:

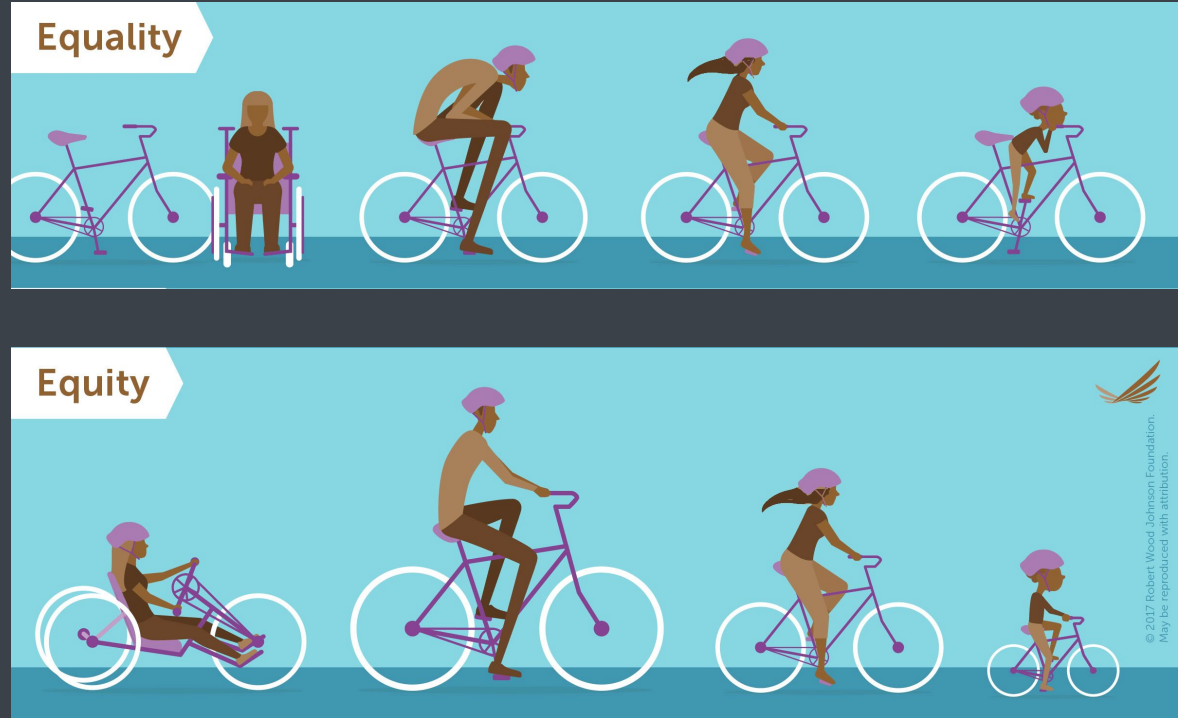
Boxes

Ensuring resources (boxes) are distributed in a manner that allows the same access for all learners (viewing the game)



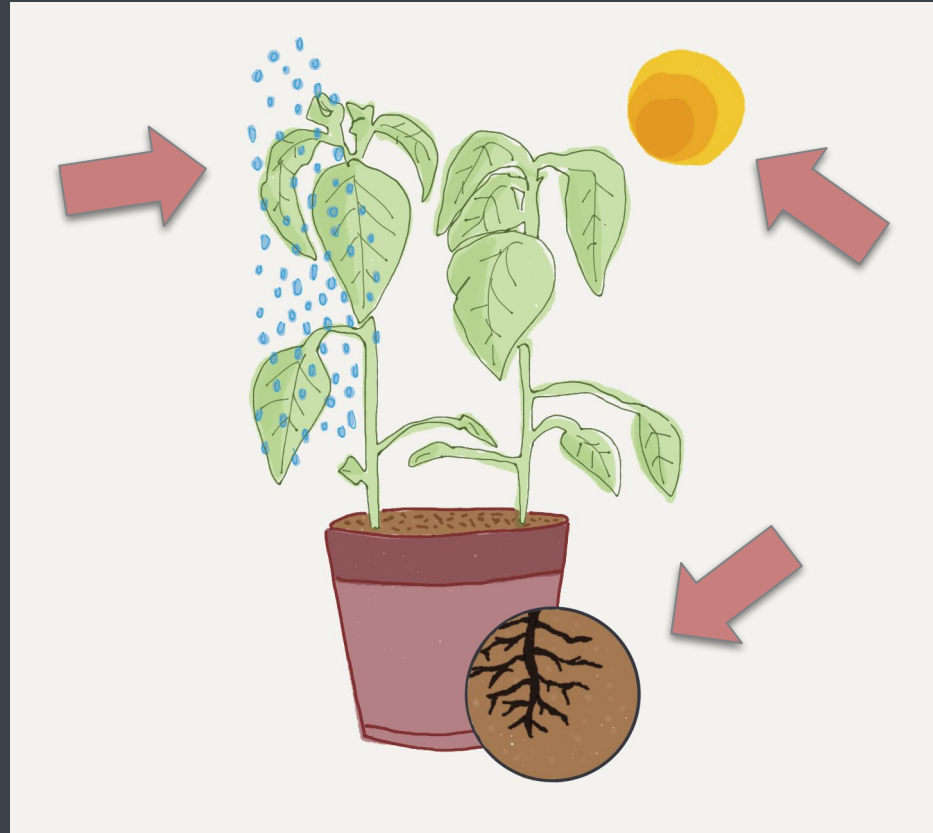
Equity vs. Equality: Bikes

Broadening definitions of success (different-sized bikes) to increase access for a wider variance of learners



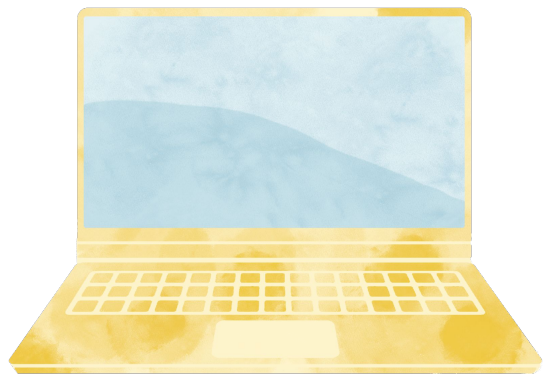
Equity vs. Equality: Environment

Equity manifests itself in the system; the water, sunlight, and soil are designed to develop every plant; equitably designed systems pay particular attention to those students who have been historically underserved.



Conversation

Which visual conception of equity speaks to you?

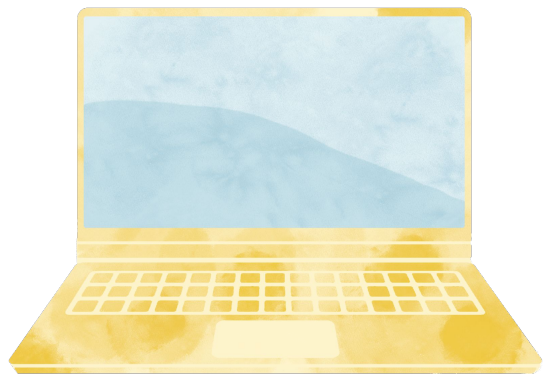


Which visual conception of equity speaks to you?



Conversation

In the chat, share what is giving you hope, related to equity and/or personalized learning.



What is giving you hope?



EXPERT

CONVERSATIONS

A Webinar Series

Delve into the Specific Principles that Drive
Personalized Learning Reimagined

REGISTER NOW!

edelements.com/expert-convos

Oct 21
Student-Centered
Design

Oct 28
Nurturing Learning

Nov 4
Equity Focused

Nov 9
Data Informed