

# PERSONALIZED LEARNING

WITH EDUCATION ELEMENTS



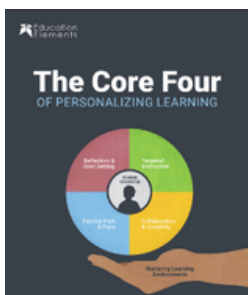
## OUR CORE BELIEFS

### Education Elements believes that:

- When students are trusted and their experiences are honored in our classrooms, they are able to take more ownership of their learning.
- When communities are heard and understood, they are invested and inspired by the work happening in schools.
- When adults experience learning that is personalized for them, it leads them to create those experiences for students.
- When teams solve challenging problems together, they are more resilient for future changes and work.

We also believe that Personalized Learning isn't a specific strategy or model, but rather a combination of student-centered best practices under a common vision for classroom instruction. At Education Elements our work is grounded in the Core Four -- Reflection and Goal Setting, Collaboration and Creativity, Targeted Instruction and Flexible Path and Pace. Within these four components, there is ample research to support the use of data (both formative and summative), differentiation (group-based or individual), the value of providing students opportunities to reflect and set goals (develop metacognition), and the importance of allowing students to make decisions through choice and flexibility.

## OUR THOUGHT LEADERSHIP



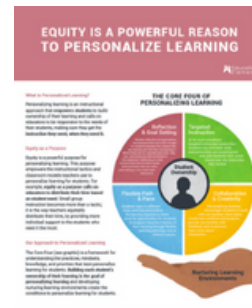
[White Paper]  
The Core 4 of Personalized Learning



[One Pager]  
Student Centered Approach



[One Pager]  
Nurturing Learning Environments



[One Pager]  
Equity in PL



[One Pager]  
Data-Informed PL

## DISTRICTS WE WORK WITH

Auburn SD, AL  
 Capital City Lighthouse  
 Charter, AR  
 Cado Academy, AR  
 Fresno Unified SD, CA  
 Atlanta Public SD, GA  
 Bibb County SD, GA  
 Liberal USD 480, KS  
 Socrates Academy, SC  
 Rochester SD, NH  
 Dundee CSD, NY

Delaware Academy CSD, NY  
 Ellenville CSD, NY  
 Ewing Public SD, NY  
 Enlarged City SD, NY  
 Franklin CSD, NY  
 Manchester-Shortsville Central  
 SD, NY  
 Pine Bush CSD, NY  
 New Ulm PS, MS  
 Cleveland MSD, OH  
 Aldine ISD, TX

Clear Creek ISD, TX  
 Dallas ISD, TX  
 Frisco ISD, TX  
 Galena Park ISD, TX  
 Little Elm ISD, TX  
 Northside ISD, TX  
 Southwest ISD, TX  
 Temple ISD, TX  
 Loudoun County PS, VA  
 Charleston County PS, SC  
 Greenwood CSD 52, SC

## PERSONALIZED LEARNING IN ACTION



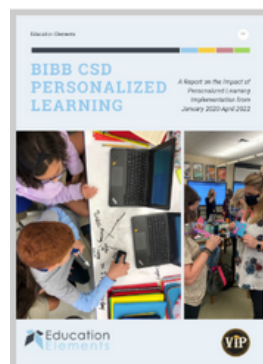
[\[Video \] Targeted Instruction- League City, TX](#)

[\[Video \]Inside the Classroom: Flexible Path and Pace- League City, TX](#)

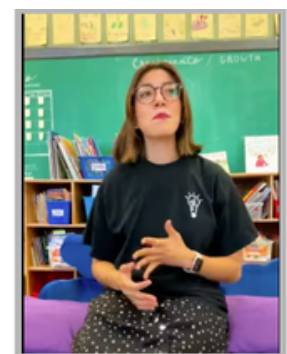
[\[Video \]Inside the Classroom: Reflection and Goal Setting- League City, TX](#)



[\[Video\] Personalized Learning Journey of Atlanta Public Schools](#)



[\[Impact Report\] Bibb CSD Personalized Learning](#)



[\[Video\] The Impact of Personalized Learning](#)