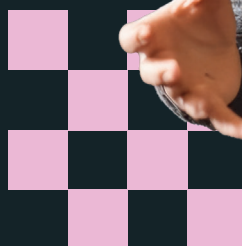


# Building a Culture of Mathematical Excellence Together

How a strategic partnership amplified student engagement and STAAR success



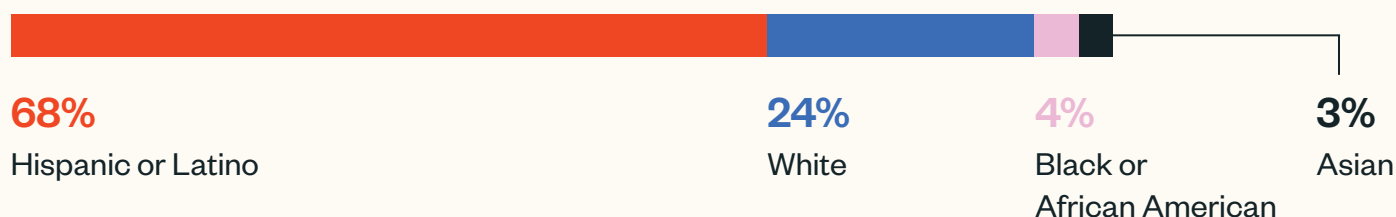
## A Shared Vision for Math Momentum in Corpus Christi ISD, TX

Corpus Christi Independent School District (ISD) is a dynamic district serving more than 33,000 students. Its commitment to providing top-tier education was recognized with the 2024–2025 **Strong Foundations Implementation Grant**.

Looking to build on this momentum and deepen their impact, district leaders sought a partner to enhance their implementation of **Texas Eureka Math** (K–1) and **Carnegie Math** (Grades 6–Algebra I).

Education Elements was honored to collaborate with Corpus Christi ISD in this strategic initiative to ensure every student had access to rigorous, grade-level math instruction. This successful partnership continues to support student learning into the 2025–2026 school year.

## A Snapshot of the Community



# How We Helped

Corpus Christi ISD entered this partnership with a clear goal: to systemically strengthen math instruction across all campuses. Education Elements designed a comprehensive, year-long support plan tailored to amplify the district's existing strengths.

Our collaborative work focused on three key areas:

## 01 Empowering Leaders

Provided learning and support for principals, coaches, and district leaders to foster a shared vision for math achievement

## 02 Building Systems for Consistency

Created structured PLCs, aligned curriculum calendars, and practical instructional walkthrough tools to ensure a unified, high-quality learning experience for every student

## 03 Deepening Instructional Practice

Enhanced the use of the Concrete-Representational-Abstract (CRA) model, empowering teachers to use manipulatives and guide students toward deeper conceptual understanding

# Celebrating Measurable Impact and Growth

The powerful collaboration between Corpus Christi ISD and Education Elements yielded significant, measurable gains for both teachers and students—solidifying the district's position as a leader in math education.



## A Leap Forward in Instructional Quality

The partnership fostered remarkable growth in teaching practices. Through focused collaboration, the district achieved commendable progress:

**71.3% of teachers** reported increased lesson internalization.

Adherence to high-quality instructional materials (HQIM) rose to **over 91%**.

Strong Tier I instruction improved in **93.8% of classrooms**, with rigorous, standards-aligned lessons reaching **over 70% of classrooms**.



## Elevated Student Engagement

Students responded enthusiastically to the enhanced teaching strategies. Engagement with the CRA math model—a cornerstone of conceptual understanding—increased from **67.6% to 76%** between Fall 2024 and Spring 2025, demonstrating higher levels of student participation and confidence.



## Validated by State Achievement

This journey of growth was powerfully validated by the state's primary proficiency benchmark, the **STAAR test**. Even amid a challenging statewide redesign of the STAAR assessment and accountability measures, Corpus Christi ISD's strategic focus delivered remarkable results, nearly doubling its recognition with **nine "A" schools** and **40 distinction designations**.

# Sustaining a Legacy of Success

This partnership has laid a strong and sustainable foundation for the future of math education in Corpus Christi ISD. Education Elements recommends continuing this trajectory by further embedding proven strategies into the district's core processes, ensuring this success becomes a lasting legacy.

