

Check In

Put in the chat box:

- Your name
- Your location
- Your role
- Your answer to the question to the left!

1



2



3



4



5



6



How are we connected?

Shelby McIntosh

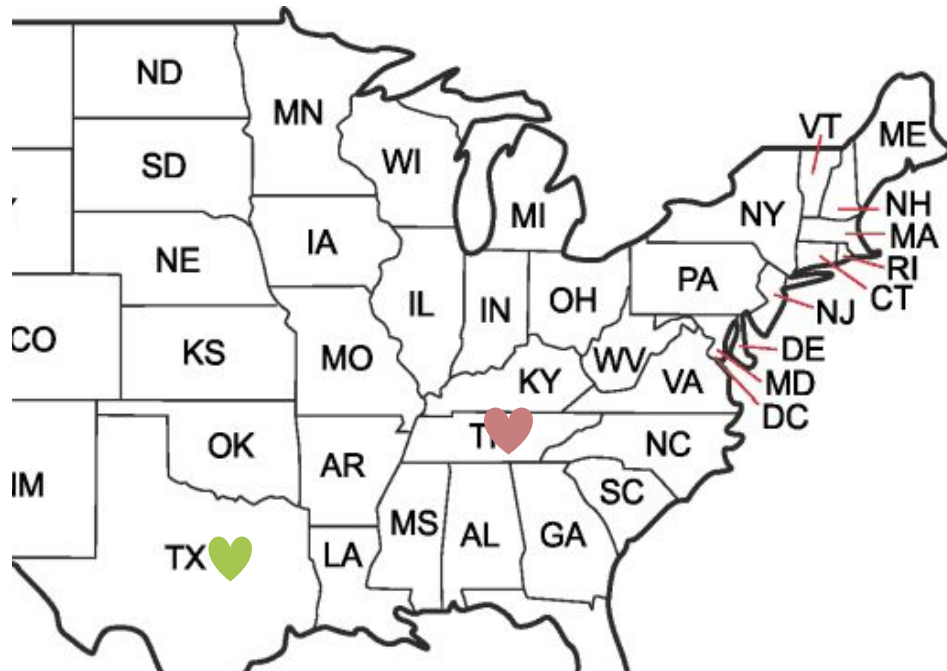
shelby@edelements.com

@Shelby_McIntsh



Rani Banjarian

rani@edelements.com



EXPERT

CONVERSATIONS

A Webinar Series

Delve into the Specific Principles that Drive
Personalized Learning Reimagined

REGISTER NOW!

edelements.com/expert-convos

Oct 21
Student-Centered
Design

Oct 28
Nurturing Learning

Nov 4
Equity Focused

Nov 9
Data Informed

Principles that inform systems-level change



Student-Centered Design

A student-centered approach to learning that calls on educators to be responsive to the needs of their students, ensuring they get the instruction they need, when they need it.



Nurturing Learning Environments

Developing nurturing learning environments (self-awareness, social awareness, strong relationships) creates the conditions to personalize learning for students.



Equity Focused

Equity provides a powerful reason to personalize learning for students, and it requires us to reimagine the systems that are not supporting the success of all students.



Data Informed

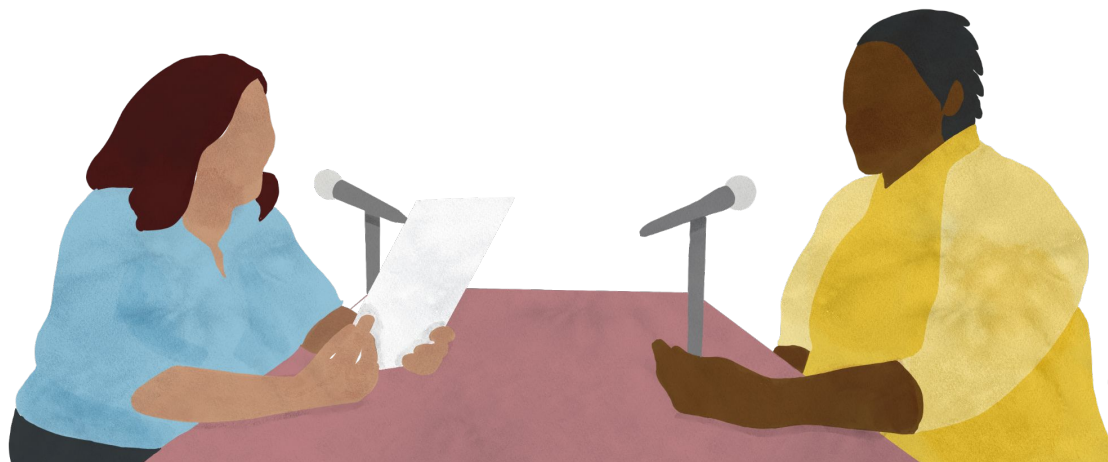
Organizations have deeply embedded practices and norms about how data is used. They take a holistic approach to data that is user-centered.

Objectives

Share a variety of perspectives

Promote conversations

Discuss alignment with personalized learning



A New Way to Engage in the Chat



#aha = new idea/insight



#debate = I have a different opinion I'd like to share or would like to push back on what was shared by someone else

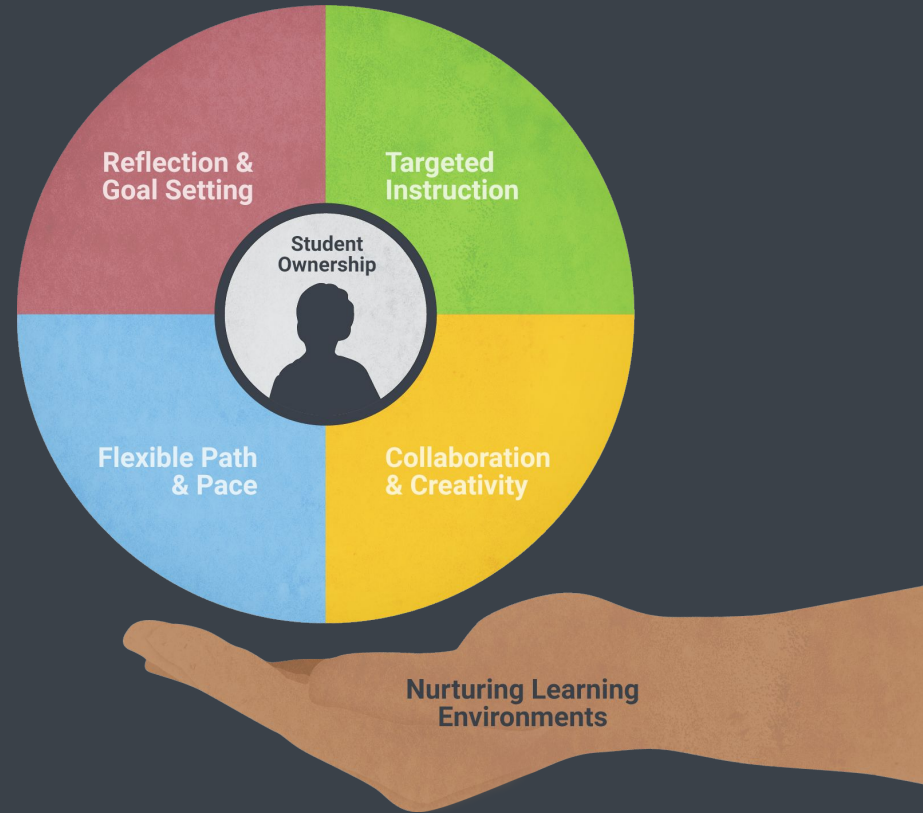


#question = I need clarification on something that was shared



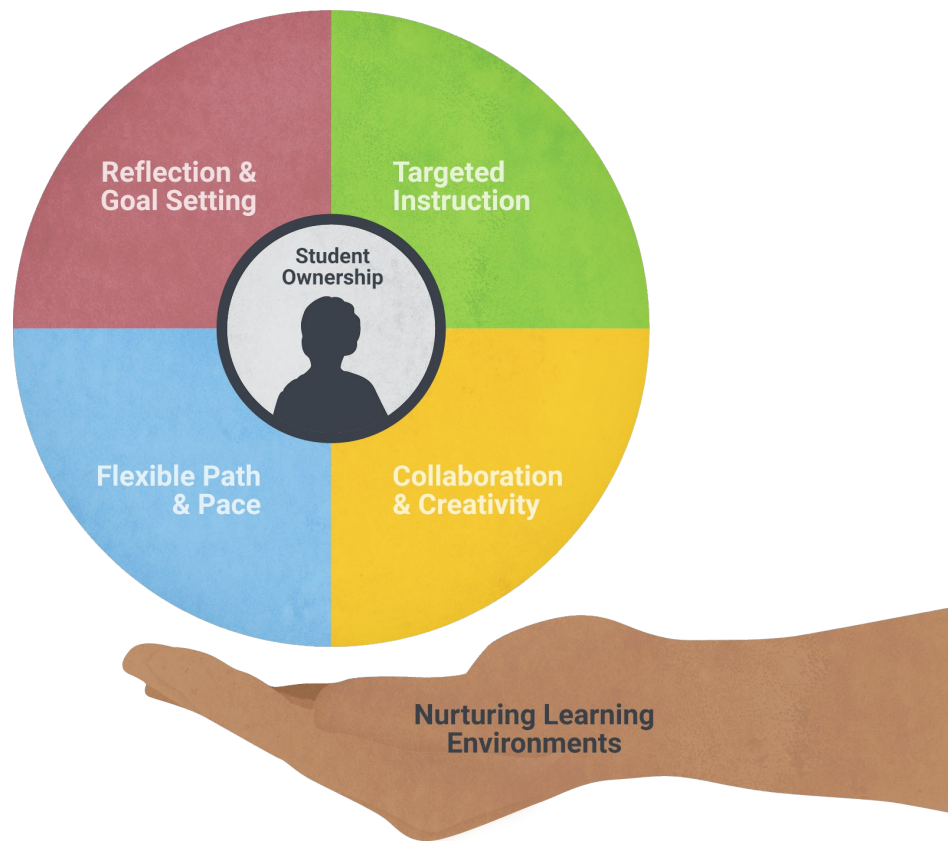
#onfire = this is really resonating with my thinking (boost our ego)

Our Approach



The Core Four of PL

- Student ownership is the goal
- Nurturing learning environments are essential
- Four components (classroom practices)



The Goal is Student Ownership



Data Informed

Organizations have deeply embedded practices and norms about how data is used. They take a holistic approach to data that is user-centered.



Conversation

In the chat, share what
what is resonating with
you



What do we mean by “data culture”?

**What are the characteristics of a strong
data culture?**



What is culture?

Beliefs: what the district and its stakeholders believe to be true about data.

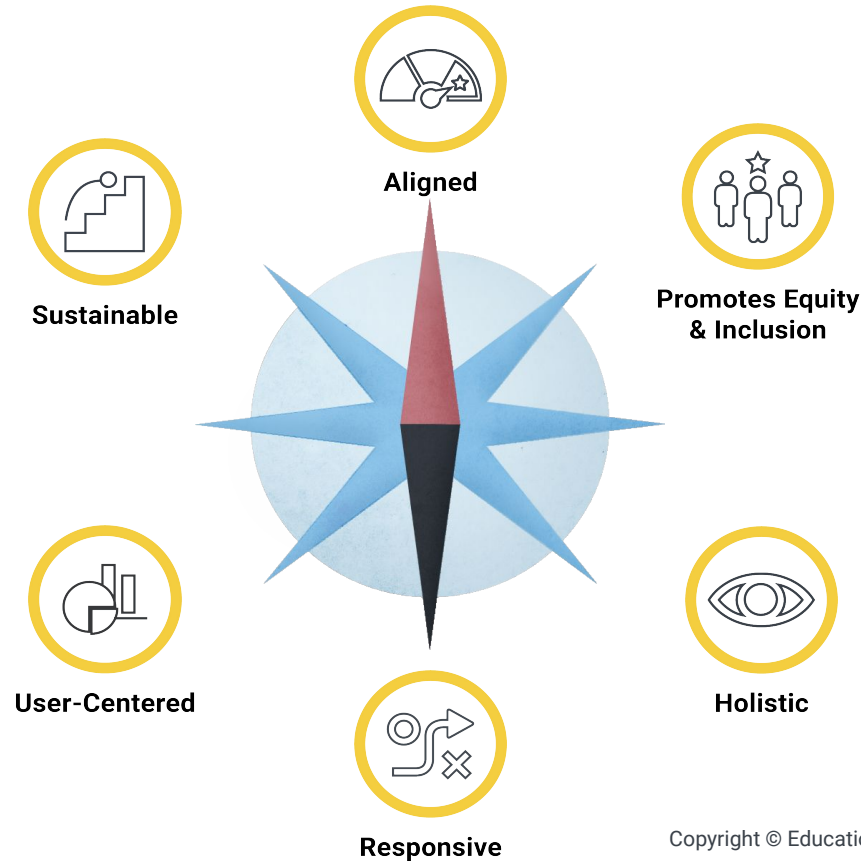
Norms: the rules and expectations that guide data use and the practices that are inherently reinforced.

Spaces: where data are used, stored, and shared.

Values: the standards that are used to decide what is good and what is bad, what is right and what is wrong; the guidelines used for using data.

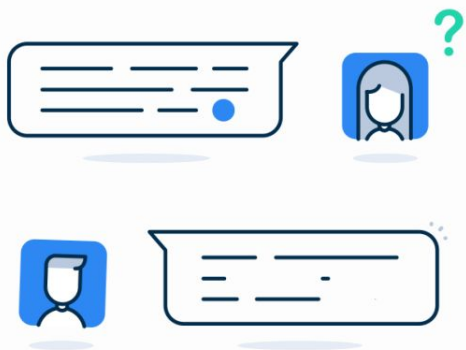
Resources: the data the district has chosen to collect and the tools available for accessing and using the data.

Essential Elements of Strong Data Culture



Conversation

In the chat, share
**Where have you been challenged in
developing data culture in your
context?**



**What role does data culture play in
personalized learning?**

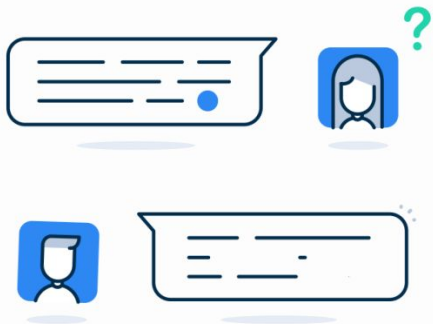
Advice for developing data culture



Conversation

In the chat, share
**What is resonating with
you?**

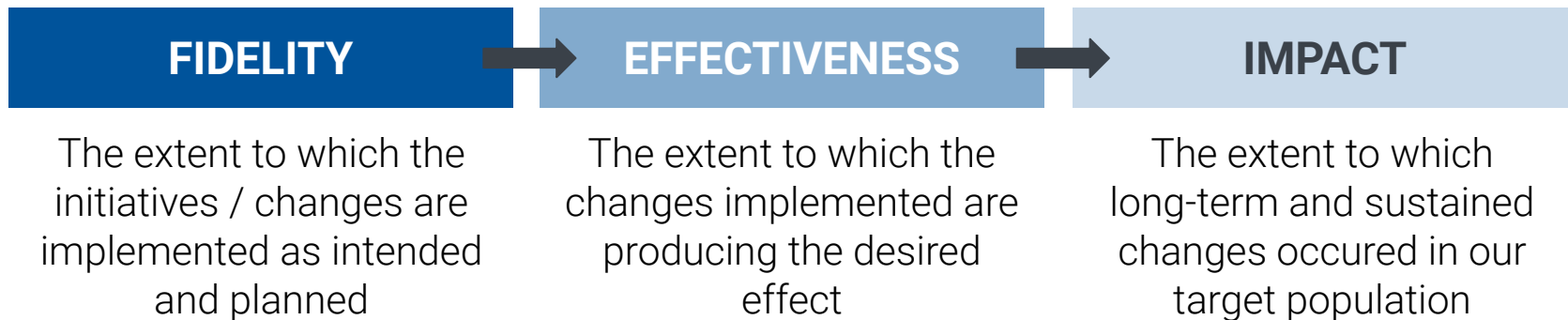
**In what other ways have districts been challenged related to
developing a strong data culture?**



Monitoring Metrics

Adding metrics to a theory of action provides the insight needed to know when to pivot, when to keep going, and ultimately, whether or not the changes you are seeing are actually attributable to the program or change you are implementing (causal connection).

Metrics can be related to:



Monitoring Metrics

Adding metrics to a theory of action provides the insight needed to know when to pivot, when to keep going, and ultimately, whether or not the changes you are seeing are actually attributable to the program or change you are implementing (causal connection).

Metrics can be related to:



Conversation

In the chat:

**what you are inspired to try
related to data culture and/or
personalized learning.**



What are you inspired to try?



EXPERT

CONVERSATIONS

A Webinar Series

Delve into the Specific Principles that Drive
Personalized Learning Reimagined

REGISTER NOW!

edelements.com/expert-convos

Oct 21
Student-Centered
Design

Oct 28
Nurturing Learning

Nov 4
Equity Focused

Nov 9
Data Informed